



# DRILLING LOG



FROM :(mt) 100

TO :(mt) 1940

SCALE : 1/ 1000

Well Name : LONGTOM-3

Company : Nexus Energy

Country : AUSTRALIA

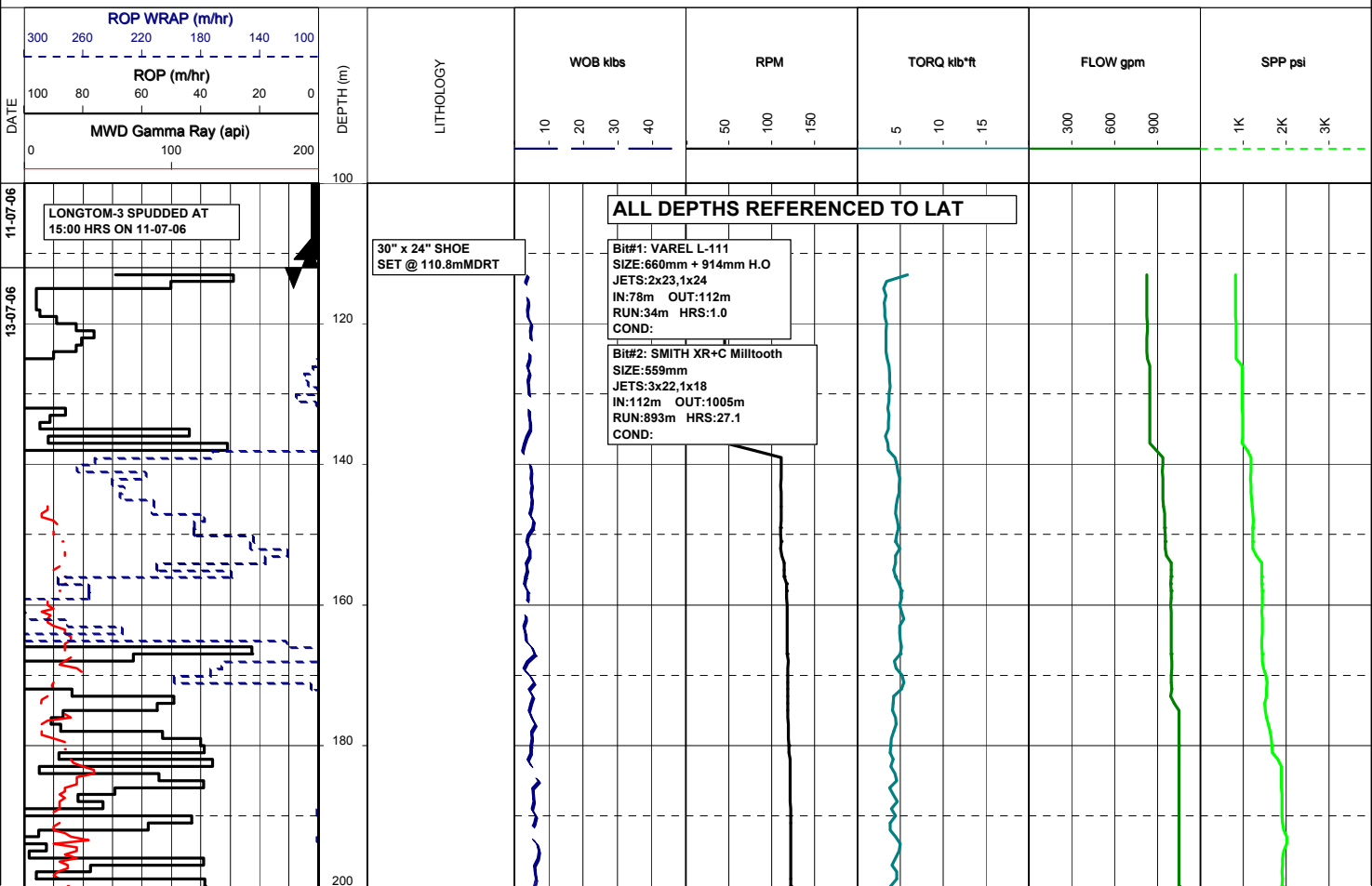
RT-MSL (m): 21.5

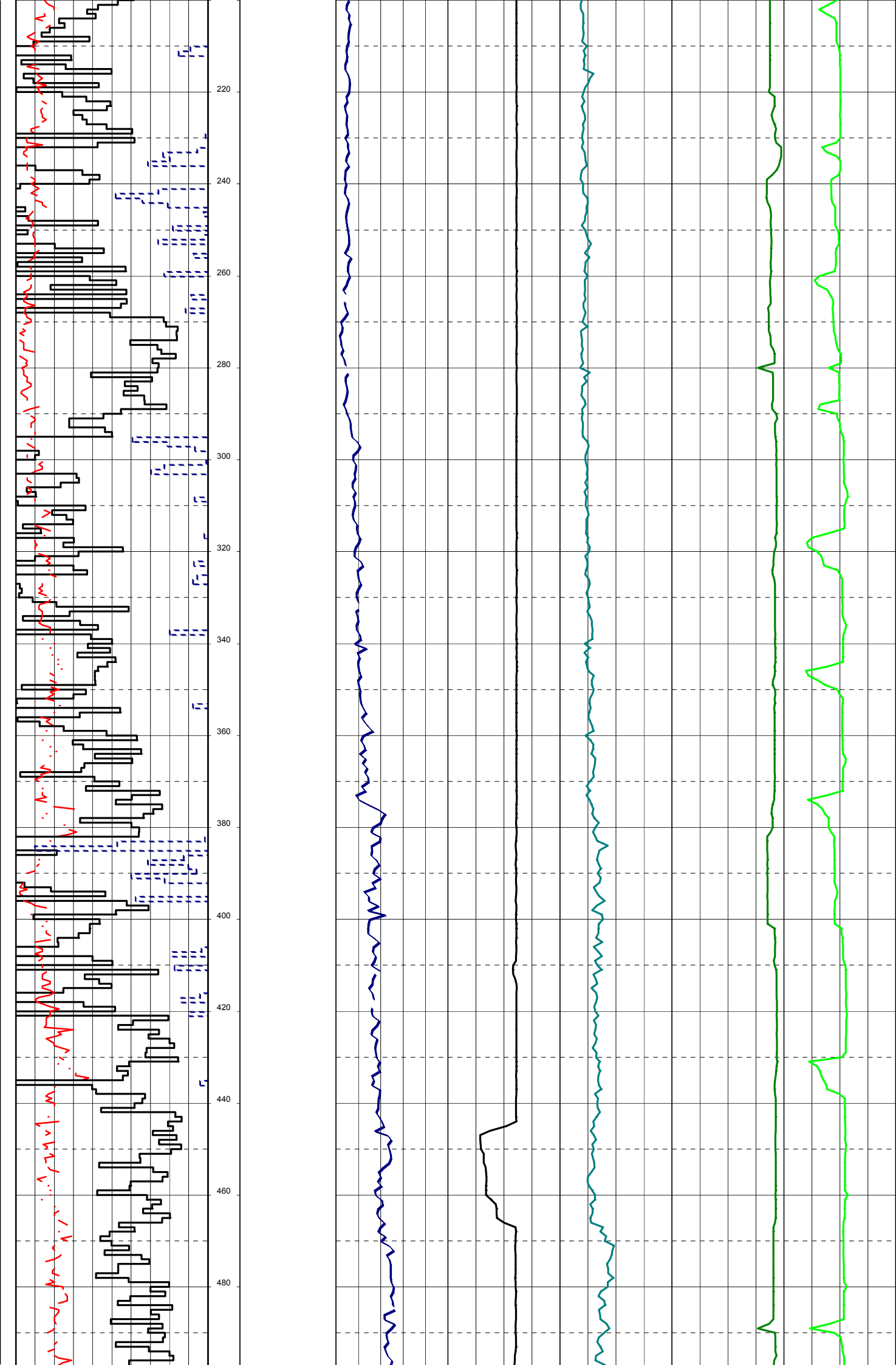
Final TD (mMDRT): m

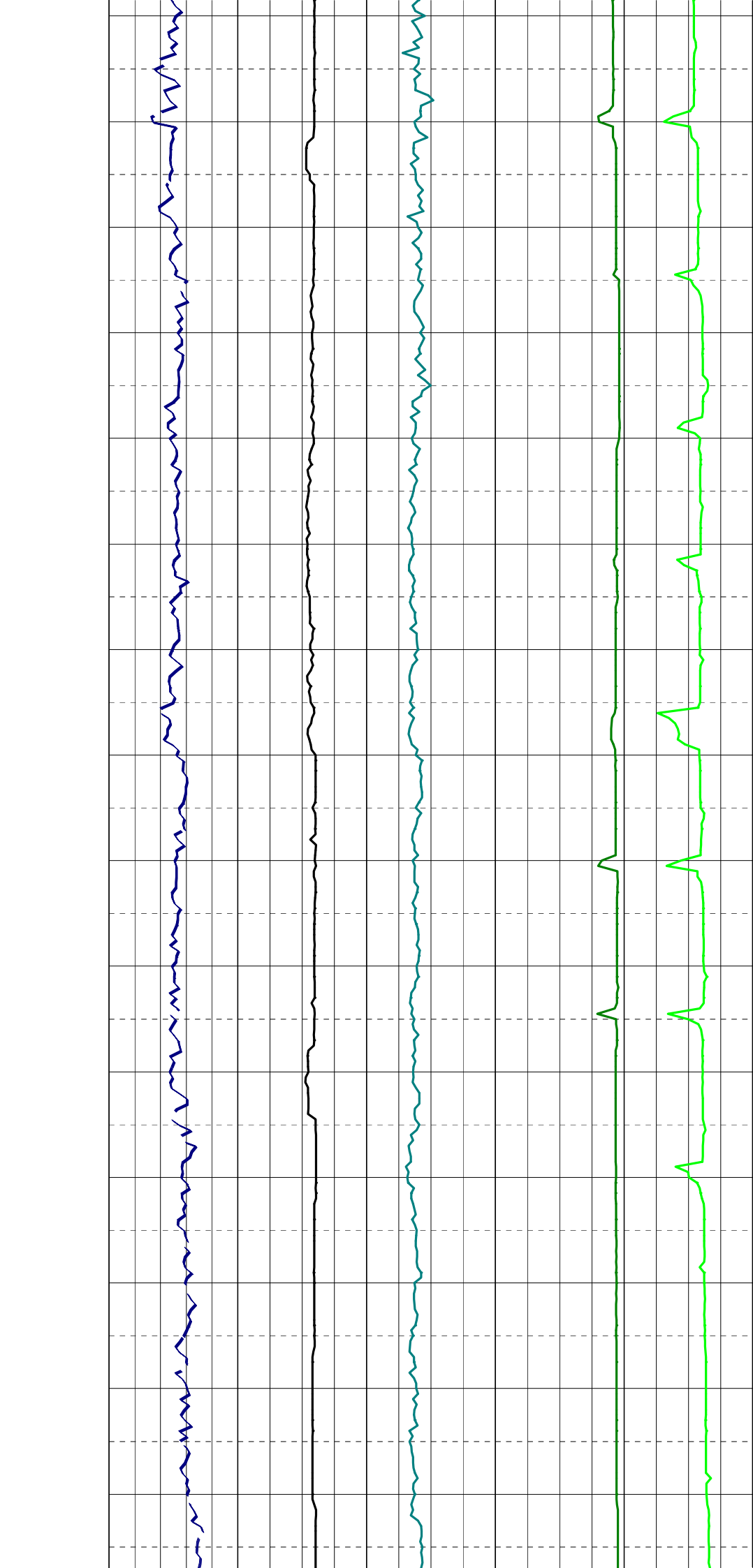
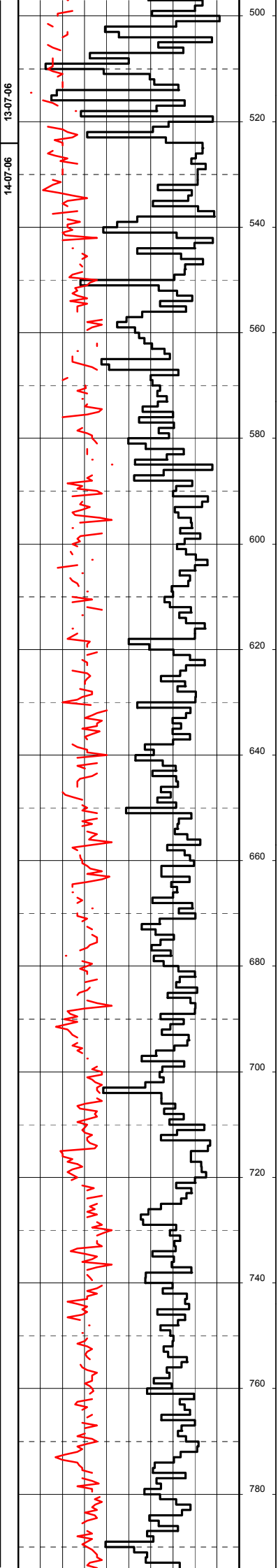
RT-SEABED (m): 78.2

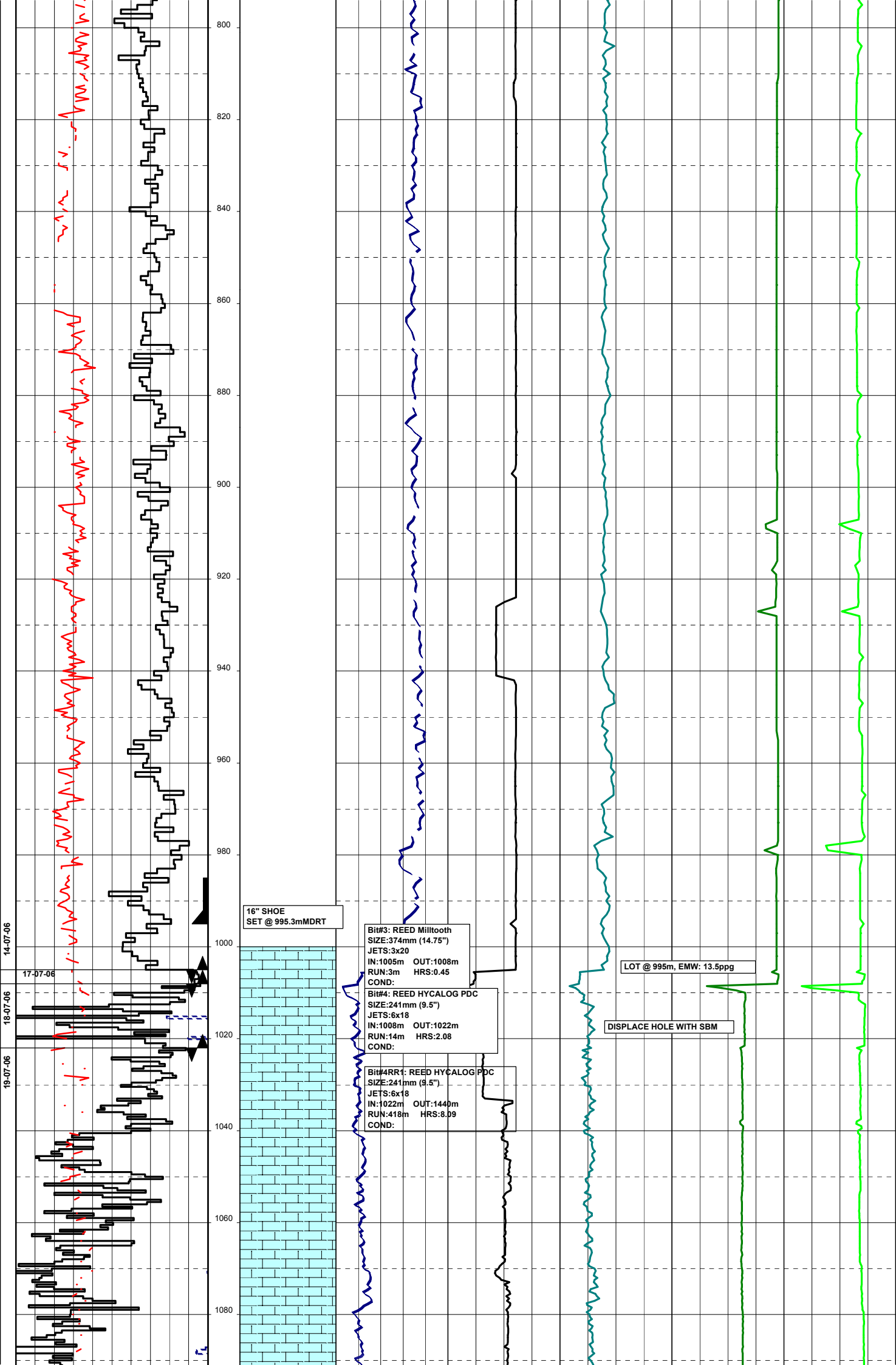
Final TVD (m TVDSS): m

Generated by ALS Package









16" SHOE  
SET @ 995.3mMDRT

Bit#3: REED Milltooth  
SIZE:374mm (14.75")  
JETS:3x20  
IN:1005m OUT:1008m  
RUN:3m HRS:0.45  
COND:

Bit#4: REED HYCALOG PDC  
SIZE:241mm (9.5")  
JETS:6x18  
IN:1008m OUT:1022m  
RUN:14m HRS:2.08  
COND:

Bit#4RR1: REED HYCALOG PDC  
SIZE:241mm (9.5")  
JETS:6x18  
IN:1022m OUT:1440m  
RUN:418m HRS:8.09  
COND:

LOT @ 995m, EMW: 13.5ppg

DISPLACE HOLE WITH SBM

14-07-06

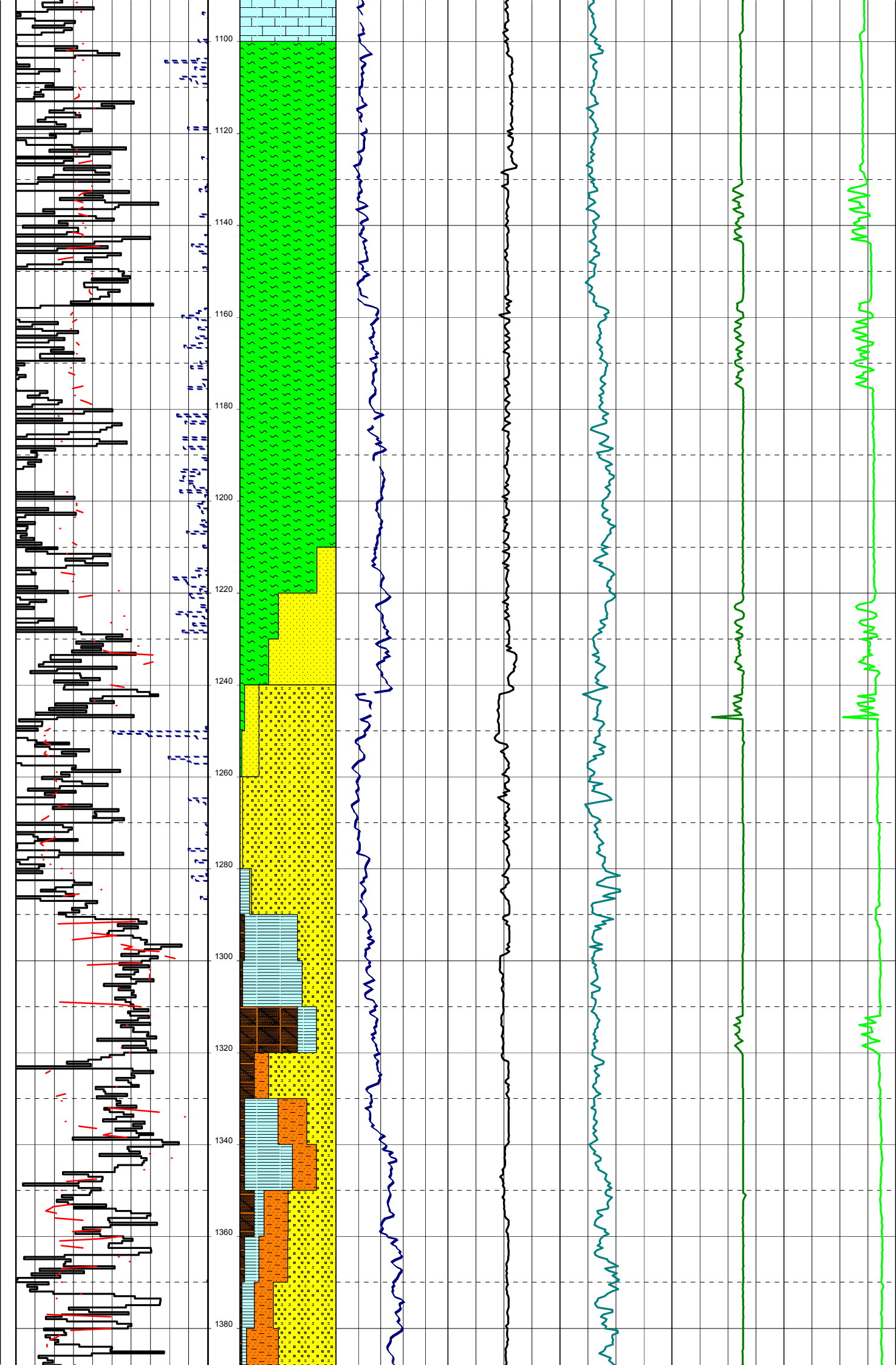
17-07-06

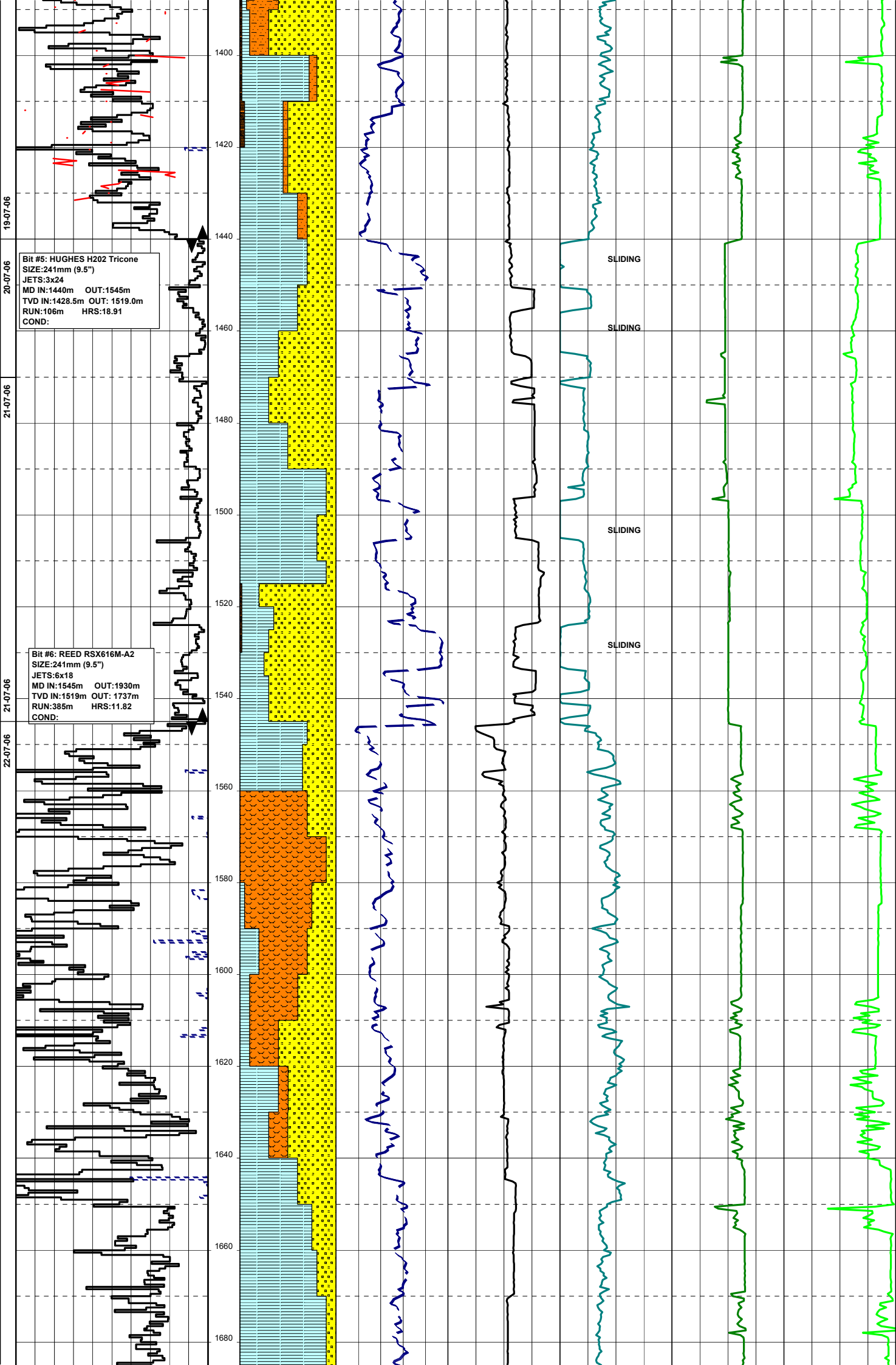
18-07-06

19-07-06

800  
820  
840  
860  
880  
900  
920  
940  
960  
980  
1000  
1020  
1040  
1060  
1080

*Handwritten red notes:*  
1. ...  
2. ...  
3. ...  
4. ...  
5. ...  
6. ...  
7. ...  
8. ...  
9. ...  
10. ...  
11. ...  
12. ...  
13. ...  
14. ...  
15. ...  
16. ...  
17. ...  
18. ...  
19. ...  
20. ...  
21. ...  
22. ...  
23. ...  
24. ...  
25. ...  
26. ...  
27. ...  
28. ...  
29. ...  
30. ...  
31. ...  
32. ...  
33. ...  
34. ...  
35. ...  
36. ...  
37. ...  
38. ...  
39. ...  
40. ...  
41. ...  
42. ...  
43. ...  
44. ...  
45. ...  
46. ...  
47. ...  
48. ...  
49. ...  
50. ...  
51. ...  
52. ...  
53. ...  
54. ...  
55. ...  
56. ...  
57. ...  
58. ...  
59. ...  
60. ...  
61. ...  
62. ...  
63. ...  
64. ...  
65. ...  
66. ...  
67. ...  
68. ...  
69. ...  
70. ...  
71. ...  
72. ...  
73. ...  
74. ...  
75. ...  
76. ...  
77. ...  
78. ...  
79. ...  
80. ...  
81. ...  
82. ...  
83. ...  
84. ...  
85. ...  
86. ...  
87. ...  
88. ...  
89. ...  
90. ...  
91. ...  
92. ...  
93. ...  
94. ...  
95. ...  
96. ...  
97. ...  
98. ...  
99. ...  
100. ...





23-07-06

